



# Instruction manual



2025-11-28

**Ice maker hollow ice cube 22 g water  
cooling 33 kg/24h  
IMK 3315 W**

[www.rmgaastro.com](http://www.rmgaastro.com)



# OBSAH

<b>1. DECLARATION OF CONFORMITY</b>	<b>3</b>
<b>2. TECHNICAL DATA</b>	<b>3</b>
<b>3. LOCATION ELECTRIC</b>	<b>3</b>
<b>4. SAFETY MEASURES FOR FIRE PROTECTION</b>	<b>3</b>
<b>5. INSTALLATION</b>	<b>4</b>
<b>6. WATER CONNECTION</b>	<b>4</b>
<b>7. CONNECTING THE ELECTRICAL CABLE TO THE NETWORK</b>	<b>4</b>
<b>8. INSTRUCTIONS FOR USE</b>	<b>6</b>
<b>9. CLEANING AND MAINTENANCE</b>	<b>9</b>

## 1. DECLARATION OF CONFORMITY

Decree of the Ministry of Health of the Czech Republic no. 38/2001 Coll. of 19 January 2001 Regulation (EC) No 1907/2006 - Registration, Evaluation, Authorisation and Restriction of Chemicals (REACH) Regulation of the European Parliament and Council Regulation (EC) no. 1935/2004 of 27 October 2004

The products meet the requirements of §26 of Act No.258/2000 as amended. The products meet the requirements of RoHS Directive 2015/863/EU, 10/2011, 517/2014, 2015/1094, 2015/1095.

Attention, the manufacturer gives up any responsibility in case of direct and indirect damage that is related to poor installation, incorrect intervention or adjustments, insufficient maintenance, incorrect use and which are eventually caused by other causes than the points referred to in the conditions of sale. This appliance is intended only for professional use and must be operated by qualified persons. Parts that have been secured by the manufacturer or authorized worker after the setting rebuild.

## 2. TECHNICAL DATA

The label with technical data is located on the side or back panel of the device. Please read the wiring diagram and all the following information in the attached manual before installation.

Net Width [mm]	Net Depth [mm]	Net Height [mm]	Net Weight [kg]	Power electric [kW]	Loading
405	849	849	41.00	0.250	230 V / 1N - 50 Hz

## 3. LOCATION ELECTRIC

For the correct operation and placement of the appliance, it is necessary to observe the following all prescribed standards for the given market. Unpack the device and check that the device has not been damaged during transport. Place the device on a horizontal surface (maximum unevenness up to 2°). Small unevenness can be leveled with adjustable feet. If the device will be placed in such a way that it will be in contact with the walls of the furniture, these must withstand a temperature of up to 60°C. Installation, adjustment, commissioning must be performed by a qualified person who is authorized to perform such operations, according to applicable standards. The device can be installed separately or in series with devices of our production. A minimum distance of 10 cm from flammable materials must be observed. In this case, it is necessary to secure the appropriate modifications to ensure the thermal insulation of the combustible parts. The appliance must only be installed on a non-flammable surface or against a non-flammable wall. **Parts of the appliance provided by the manufacturer. or his representative, the worker performing the installation may not rebuild the product.**

## 4. SAFETY MEASURES FOR FIRE PROTECTION

- the appliance may only be operated by adults
- the appliance may be used safely in accordance with applicable market standards:

Fire protection in spaces with special risk or danger

Protection against the effects of heat

- the appliance must be placed so that it stands or hangs firmly on a non-combustible surface

Objects of flammable substances must not be placed on the appliance at a distance less than a safe distance from it (the smallest distance between the appliance and flammable substances is 10 cm).

Table: degree of flammability of building materials included in st. flammability of substances and products

Degree of flammability	Building materials
A - non-flammable	granite, sandstone, concrete, brick, ceramic tiles, plaster
B - Not easily flammable	Acumin, Heraclitus, Lihnos, Itaver
C1 - highly flammable	wood, hardwood, plywood, hard paper, umakart
C2 - moderately flammable	chipboards, solodur, cork boards, rubber, flooring
C3 - Highly flammable	wood fiber boards, polystyrene, polyurethane, PVC

- information on the degree of flammability of common building materials is given in the table above. Appliances must be installed in a safe manner. During installation, the relevant design, safety and hygiene regulations must also be respected:
- fire safety of local appliances and heat sources
- fire protection in areas with special risk or danger
- protection against the effects of heat

## 5. INSTALLATION

**Important:** The manufacturer does not provide any warranty for defects arising as a result of incorrect use, failure to follow the instructions contained in the attached user manual and mishandling of appliances. Installation, modification and repair of appliances for large kitchens, as well as their dismantling due to possible damage to the gas supply, can only be carried out on the basis of a maintenance contract, this contract can be concluded with an authorized dealer, while technical regulations and standards and regulations must be observed regarding installation, electrical supply, gas connection and work safety. Technical instructions for installation and adjustment, for use by specialized technicians ONLY. The instructions that follow refer to a technician qualified for installation to carry out all operations in the most correct manner and according to the applicable standards. Any activity related to regulation etc. must only be performed with the device disconnected from the network. If it is necessary to keep the appliance under voltage, the utmost care must be taken. The type of appliance for extraction is declared on the nameplate, it is an A1 appliance.

## 6. WATER CONNECTION

Water connection is done using G1/2 threaded hoses. The water supply must be fitted with separate closures that are freely accessible and within reach of the device. The device includes return valves. The water for filling the duplicator space must be softened - a maximum of 5 ° the French scale of water hardness. The water pressure must be in the range of 50-300 kPa.

## 7. CONNECTING THE ELECTRICAL CABLE TO THE NETWORK

Installation of the electrical supply - this supply must be separately secured. Ato with the corresponding circuit breaker of rated current depending on the power input of the installed device. Check the power consumption of the device on the production label on the back panel (or side) of the device. The connected ground wire must be longer than the other wires. Connect the device directly to the network, it is necessary to insert a switch between the device and the device with a minimum distance of 3 mm between the individual contacts, which corresponds to the applicable standards and load. The earth supply (yellow-green) must not be interrupted by this switch. Connect the device to the mains if the socket has adequate protection. In any case, the supply cable must be located so that it does not reach a temperature of 50 degrees higher than the environment at any point. Before the appliance is connected to the network, it is necessary to first make sure that:

- the supply circuit breaker and the internal distribution can withstand the current load of the appliance (see matrix label)
- the distribution board is equipped with effective grounding according to the standards of the relevant market and the conditions given by law
- the socket or switch in the supply is easily accessible from the appliance
- the electrical supply to the device must be made of oil-resistant material

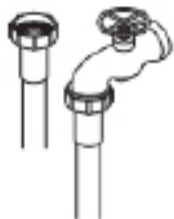
**We disclaim any responsibility in the event that these standards are not respected and in the event of a violation of the above principles. Before first use, you must clean the device, see chapter "cleaning and maintenance". The appliance must be grounded using a screw with a grounding mark.**

- Do not insert the plug of the power supply into the electrical outlet. sockets and do not pull out the zel. sockets with wet hands and pulling on the power cord!
- Do not use extension cords or multiple sockets.

- **The mains connection point must have a maximum of the following impedance:  $Z_{MAX} = 0.042 + j 0.026 \Omega$  for the phase conductors and  $0.028 + j 0.017 \Omega$  for the neutral conductor.**



Air outlets/refurbishment must be provided in the area between the rear of the machine and the wall.



#### WATER AND WATER RUNOFF

Water quality significantly influences the quality, hardness and taste of the ice, and in the case of water condensers it influences the longevity of the condenser.

### CONNECTION TO THE WATER NETWORK

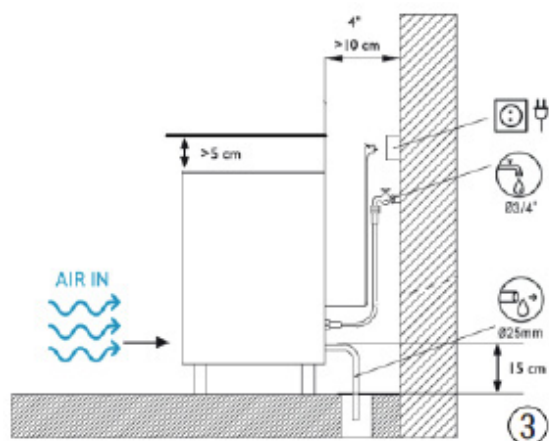
Use the flexible connection (length 1.3 m.) with the two filter seals supplied with the device. Secure the necessary devices according to regulations or applicable standards to prevent water from returning to the mains.

The pressure must be between 0.1 MPa and 0.6 MPa (1 to 6 BAR). If the pressure exceeds these values, install the necessary corrective elements.

### CONNECTION TO THE WATER DRAIN

The drain must be lower than the device, at least 150 mm.

The drain pipe should have an internal diameter of 30 mm with a minimum slope of 3 cm per metre (see picture).



### ELECTRICAL CONNECTION

#### THIS DEVICE MUST BE CONNECTED TO A GROUNDED PLUG

In order to prevent possible electrical shock to persons or damage to equipment, earthing is required according to the standards of regional or national legislation.

THE MANUFACTURER IS NOT RESPONSIBLE FOR DAMAGE CAUSED BY FAILURE TO GROUND THE INSTALLATION.

#### Warning:

- The location of the equipment must ensure that the electrical supply is not damaged, even partially.
- Do not install portable power outlets or other power supplies in the rear of the unit.

The device comes with a 1.5m cable. If the power cable is damaged it must be replaced with a special cable or total provided by the manufacturer or warranty service.

The replacement must be carried out by qualified technical personnel.

The device shall be positioned so that there is a minimum space between the rear of the device and the wall to allow convenient and risk-free access to the cable plug.

Fix the corresponding socket.

It is appropriate to install the switch and the relevant electrical safety features in accordance with regional or national regulations.

Voltage and intensity are indicated on the type plate and technical data sheet of this manual. Changes in voltages greater than 10% above the voltages listed on the type plate may cause malfunctions or prevent the equipment from being connected.

## 8. INSTRUCTIONS FOR USE

### COMMISSIONING

#### 1. Previous verification

a) Is the device aligned?

b) Is the voltage and frequency the same as on the board?

c) Are the water outlets connected and functional?

(d) If it is an air condenser device. Is the circulation of the equipment and the room temperature of the site adequate?

e) Is the water pressure adequate?

ADEQUATE WATERS	
MAXIMUM	0.1 MPa (1 Bar)
MINIMUM	0.6 MPa (6 Bar)

	ROOM TEMPERATURE	WATER
MAXIMUM	43°C / 109°F	35°C / 95°F
MINIMUM	10°C/43°F	5°C / 35°F

NOTE: If the inlet water pressure is more than 0.6 MPa (6 Bar), install a pressure reducer.

#### 2. Commissioning

After reading the installation instructions (ventilation, site conditions, temperatures, water quality, etc.), proceed as follows:

1. Connect to the drinking water supply. Open the water supply. Check that there are no leaks.
2. Open the door and remove the protective elements located in the curtain.
3. Connect the device to the mains.
4. Press the device switch installed on the front of the device.
5. Check that there is no element that causes scrubbing or vibration.
6. Check that the curtain moves freely.
7. The device has a plug-in timer and allows water refilling per production cycle.
8. Check that the injectors discharge water to the evaporator in the correct direction (uniform fans).
9. Check the ice cubes after two cycles, they must be homogeneous. If they do not form properly or if the machine does not produce ice, contact an authorized technical service.

10. The unit generates ice until it stops due to a full tank via the sensor. After removing the ice from the tank, the unit will start making ice again.

## MAINTENANCE AND CLEANING PROCESS

### MAINTENANCE AND CLEANING PROCESS

**\*\*NOTE:** For all cleaning and maintenance operations, the unit must be unplugged from the power supply.

#### 1. Water condenser

1. Disconnect the device.
2. Disconnect the water supply or turn off the tap.
3. Disconnect the condenser water inlet and outlet.
4. Prepare a 50% solution of phosphoric acid and distilled or demineralized water.
5. Allow to circulate through the condenser. (The mixture is hottest when hot, ranging from 35°C(95°F) to 40°C (104°F).

DO NOT USE HYDROCHLORIC ACID

#### 2. Air condenser

1. Disconnect the device.
2. Clean the gridded area with a vacuum cleaner equipped with a brush, non-metallic brush or low pressure air.

### 3. Cleaning the tray and exterior

1. Disconnect the appliance, close the water supply and empty the ice cube tray.
2. Use a kitchen cloth with plenty of soap and water.

### 4. Cleaning the manifold and injectors

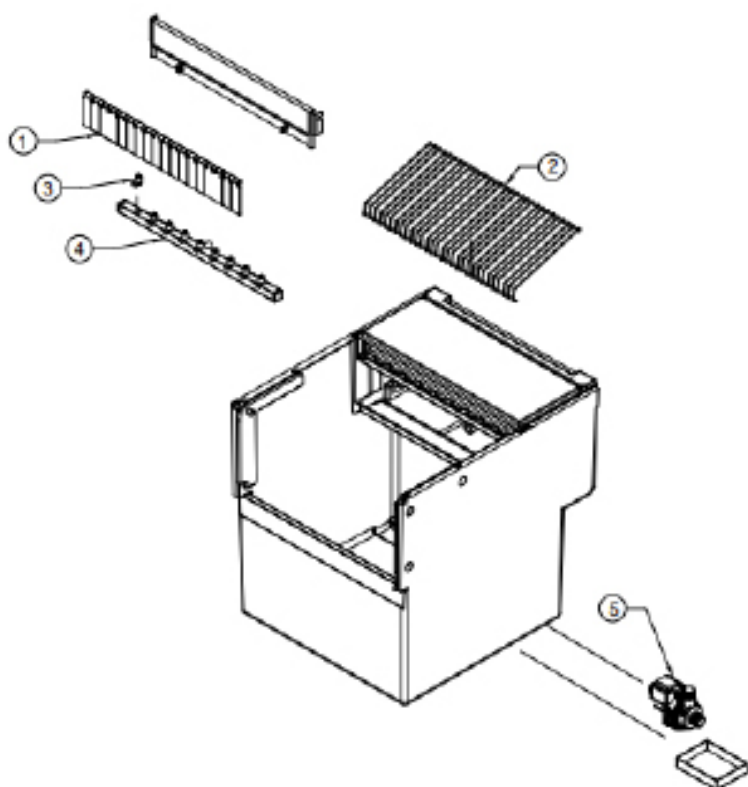
1. Remove the shelf. (Use the removal to clean it with Calklin or other non-aggressive product, wash with absorbent and rinse under running tap water).
2. Remove the grid on which the ice falls. (Clean it in the same way as the shelf).
3. REMOVE THE COLLECTOR UPWARDS (IT IS INSTALLED UNDER PRESSURE)
4. Remove the injectors and manifold covers and clean them.
5. Disassemble and clean the main pump suction filter. (IT IS INSTALLED UNDER PRESSURE)
6. Install the filter, injector and collector.

NOTE: IT IS VERY IMPORTANT THAT THE INJECTORS ARE COMPLETELY PERPENDICULAR WHEN RECONNECTING THE MANIFOLD. IF THEY REMAIN ANGLED, THE CUBES ON THE SIDES MAY REMAIN WITHOUT WATER.

### 6. Cleaning of inlet filters

Usually they are clogged in the first days of operation, ESPECIALLY IN THE CASE OF NEW WATER PLUMBING INSTALLATIONS.

Loosen the hose and clean it under a running tap.



### 6. Cleaning of inlet filters

For connections, clamps and hoses to prevent

1) Shelf

2) Discharge grille

3) Injector

4) Collector

10°F, the ice maker will need to be protected  
r's warranty does not cover cases where the  
required.

5) Filter pump



## 9. CLEANING AND MAINTENANCE

It is recommended to have the device checked with a specialist service at least once a year. All the interventions in the device can only be carried out by a qualified person who has the authorization to do so.

**CAUTION!** The device must not be cleaned with direct or pressure water. Clean the equipment daily. Daily maintenance extends the life and efficiency of the equipment. Always turn off the main inlet to the device. Wash the stainless steel parts with a damp cloth with a detergent without coarse particles and wipe dry. Do not use abrasive or corrosive cleaning agents. Attention! Before using the device, it is necessary to remove the protective foil from the entire surface, and then wash it well with water with detergent, and then wipe it with a damp cloth. **ALERT!** The warranty does not apply to all consumables subject to normal wear (rubber seals, bulbs, glass and plastic parts, etc.). The warranty also does not apply to the device if the installation is not carried out in accordance with the instructions - an authorized worker according to the corresponding standards and if the equipment was unprofessionally manipulated (interventions in the internal equipment, etc.) or were operated by unhappy staff and contrary to the instructions for use, further The warranty does not apply to damage by natural effects or other external intervention. **Required service organization 2 times a year. After the lifetime, the shipping packaging and equipment are submitted to the collection, according to the regulations on waste management and hazardous waste.**